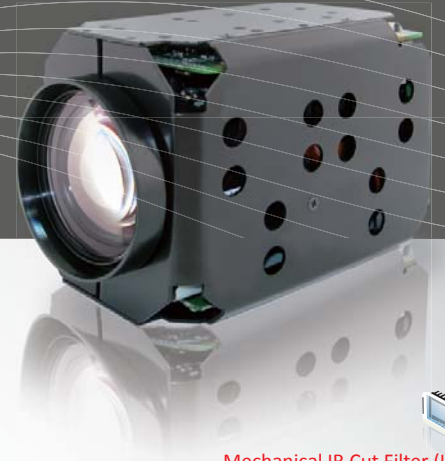


3.0 Megapixel (QXGA) WDR 18X AF Zoom IP Camera Module Nzc-WD3018T

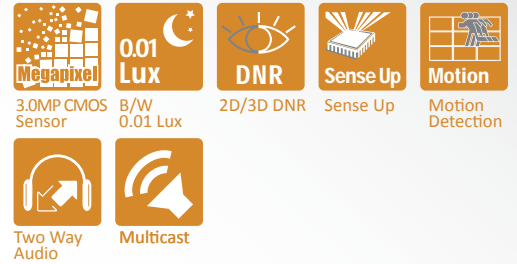
- 1 / 2.8" Sony 3.0 Megapixel Progressive Exmor™ CMOS Sensor
- 2048x1536@20fps (QXGA) ; H.264 High Profile, MPEG4, M-JPEG
- Color:0.2Lux@F1.4, B/W:0.01Lux@F1.4, Sense-up:0.001Lux@F1.4
- 2.5 Megapixel Lens, Optical 18X, Auto Focus, Auto IRIS Zoom Lens
- 2D/3D Noise Reduction & Sense Up
- Motion Detection & Alarm Trigger
- Two-way Audio & Support Multicast
- Support 9~12Vdc
- Support ONVIF 2.0 and PSIA



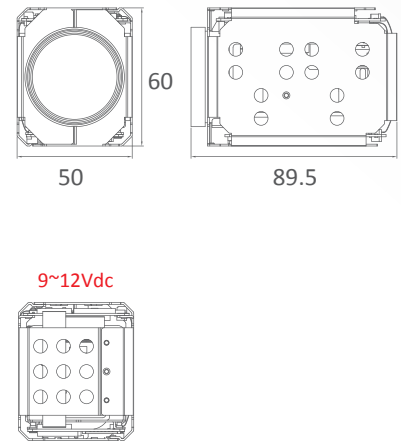
Specifications

Video	Image Sensor	1 / 2.8" Sony 3.0 Megapixel Progressive Exmor™ CMOS Sensor	
	Video Resolution/Frame Rate	2048x1536@20fps (QXGA) ; 1920x1080@30fps,1280x1024@30fps, 1280x960@30fps, 1280x720@30fps,720x480@30fps	
	Video Frame Rate	2048x1536@20fps, Others Up to 30fps	
	Video Compression	H.264 High Profile, MPEG4, M-JPEG	
	Minimum Illumination	Color:0.2Lux@F1.4, B/W:0.01Lux@F1.4, Sense-up:0.001Lux@F1.4	
	Digital Wide Dynamic Range	10 Levels (Adjustable Level Settings)	
	Second Video Output	1.0Vp-p Composite, 75Ω (BNC)	
	Signal to Noise Ratio	More than 58dB (AGC off)	
	Mechanical IR Cut Filter	Automatically Switches (B/W Mode<2Lux, Color Mode>5Lux) ; External IR LED ; Working Distance	
	IR LED ; Working Distance	Compatible with Infrared Illuminator	
	Function	Menu	Can Be Set Via Browser
Day&Night Mode		Color / B&W / Auto / External	
Auto Electronic Shutter		1/100,000 to 1/2 sec.	
Manual Electronic Shutter		1/2, 1/4, 1/8, 1/15, 1/30, 1/60, 1/120, 1/250, 1/500, 1/750, 1/1,000, 1/1,500, 1/2,000, 1/10,000, 1/100,000 sec.	
White Balance		Auto_wide / Auto_normal / Sunny / Shadow / Indoor / Lamp / FL1 / FL2	
DNR ; Sense Up		2D/3D DNR ; Yes	
Language		English / Japanese / Chinese (Traditional, Simplified) / Russian / Hungarian / German / Persian / Spanish / Polish / Dutch	
Image Setting		Brightness / Contrast / Saturation / Sharpness / DeNoise / EV Compensation / AWB / WDR / Rotation / Exposure Mode / Exposure Priority / Auto IRIS / Wide Dynamic Range	
Motion Detection		Yes	
Timer Clock		Yes	
Camera Control Interface		Pelco D, Pelco P, Customer	
Network		Browser	IE 8.0 or Above
		Ethernet	10/100M Auto Negotiation
		Bit Rate Transmission	64 up to 12,000 Kbps
	Supported Protocols	TCP, UDP, HTTP, SMTP, FTP, NTP, DNS, DHCP, PPPoE, ARP, UPnP, RTSP, RTP, SNMP, TRAP, Ethernet (RJ-45 Wired 10/100 Base-TX)	
	Video Streaming	H.264, MPEG4 and M-JPEG Dual/Triple Streaming	
	Audio Streaming	Two-way Audio ; G.711 (μLaw), 8KHz/16KHz Sample Rate	
	Users	Support 9 Users	
	Security	ID/Password Protection	
	Alarm Trigger	File Upload via FTP and Email/Notification via Email, HTTP, External Digital Output Activation, micro SD Recording	
	Multicast	Support Multicast Function	
	General	Connector	30 Pin Connector (CN1), 40 Pin Connector (CN2)
Lens		2.5M Lens 18X Optical Zoom f4.7mm(Wide)~84.6mm(Tele), F1.4 to F3.5	
Angle of View		H:55.2°(Wide)~3.2°(Tele)	
Minimum Working Distance		1m	
Focusing System		AUTO / MANUAL / PUSH AF	
Water Resistance		NA	
Max. Breaking Strength		NA	
Power Supply ; Consumption		9~12Vdc ; 3.8W	
Operation ; Storage Temp.		-10°C ~ 50°C ; -20°C ~ 60°C	
Operation ; Storage Humidity		Maximum: RH80% ; RH90%	
Dimensions		50(W)x60(H)x89.5(L)mm	
Net Weight	230g		
Accessories Option	NA		

Mechanical IR Cut Filter (ICR)



Dimensions



UNIT : mm / TOL : ±0.5



*Specifications are unfixed and do not apply to customized projects. 130402