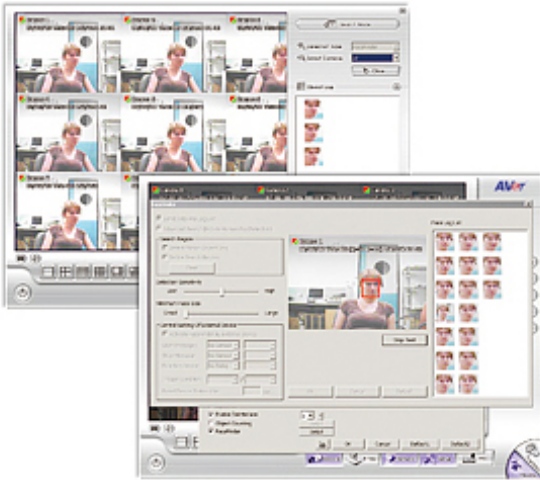


FaceFinder

The FaceFinder is an application for automatically identifying a human face. It is especially designed for users to control access to specific areas such as ATMs and prohibited zones.



features

- detects a human face during live video feeds
- triggers instant playback from the object index
- alarm condition integration includes sending email, MMS/SMS message, record, snapshot, alarm sound, relay trigger, and many more
- image log for future searches and quick playback
- advanced detection mode : eyes searching / moving object only / self-defined detection area / face-size identification
- instant testing available in setting dialogue
- customized options for ATM application
- SDK tool available
- fully integrated with IWH/SA/NV/XR series